



**FRESH LEAF**  
— F A R M S —



# HOME OF THE FRESHEST HARVEST

At Freshleaf, we deliver premium-quality produce and pantry essentials with care. Our passion for freshness, great taste, and customer happiness drives everything we do.

# WHO WE ARE

---

At Freshleaf, we are passionate about delivering high-quality, farm-fresh produce to our community. Founded with a commitment to health, sustainability, and local sourcing, our goal is to provide a reliable supply of fresh vegetables that meet the daily needs of households, restaurants, and local businesses.

We believe that everyone deserves access to nutritious, flavorful produce — and we work hard to ensure that every item we offer is grown, selected, and handled with care. From leafy greens to hearty root vegetables, Freshleaf is your trusted partner in freshness.

## OUR MAINLINES THAT WE PRODUCE

- Sweet Peppers
- Spinach
- Tomato



**LOCALLY GROWN,  
NATURALLY FRESH —  
QUALITY YOU CAN  
TASTE.**



# OUR MISSION AND VISION

---

At Freshleaf, our mission is to provide our community with fresh, high-quality, and locally sourced vegetables that support healthier living and sustainable choices.

We aim to make nutritious produce accessible and affordable for households, restaurants, small businesses, and market vendors alike. Our vision is to grow into a leading fresh produce supplier in the region – expanding our reach while maintaining the personal, reliable service our customers trust. As we scale, we remain committed to supporting local farmers, reducing food waste, and building lasting relationships with our growing customer base.

## OUR COMPETITIVE ADVANTAGE

- Locally grown
- Farm-fresh daily
- Competitive prices
- Reliable supply chain



# WHY CHOOSE US

---

## **01 Quality You Can Trust**

We handpick the freshest vegetables daily, ensuring top quality from farm to table. Our commitment to freshness means you always receive produce that's clean, nutritious, and full of flavor.

## **02 Locally Sourced, Community Focused**

By partnering with local farmers, we support sustainable agriculture and reduce environmental impact. Choosing Freshleaf means investing in your community while enjoying produce that's grown close to home.

## **03 Reliable Service, Fair Prices**

We value consistency, affordability, and customer satisfaction. Whether you're a household or a business, you can count on us for dependable deliveries, excellent communication, and competitive prices every time.

**FRESHLY PICKED  
TOMATOES,  
BURSTING WITH  
NATURAL  
FLAVOR.**



# OUR TARGET MARKET

Restaurants

Retailers

Fresh Produce Market

Street Vendors



# FRESH LEAF

— F A R M S —

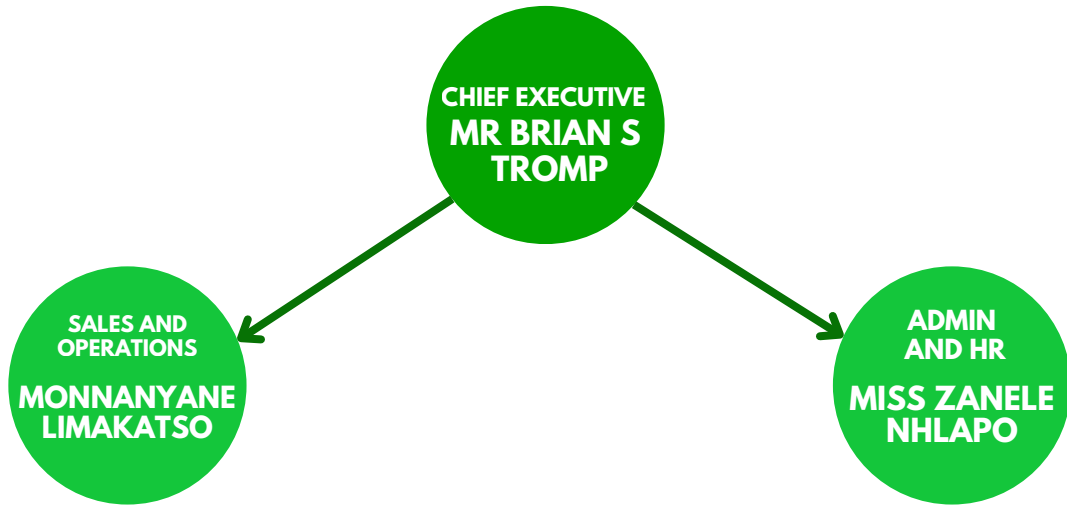
# PHOTO GALLERY



# FRESH LEAF

F A R M S

## ORGANOGRAM



## OUR FOOTPRINT

Joburg Market  
Spar  
New York Market  
Street Vendors  
Freshlinq



**FRESHLINQ**  
VAAL



**FRESH LEAF**  
F A R M S

# OUR SERVICES

---

*At Freshleaf, we offer more than just vegetables – we provide convenience, quality, and flexibility through a range of services designed to meet your needs:*

- *Fresh Produce Supply*
- *Delivery of a wide variety of freshly harvested vegetables, sorted and packaged for households, businesses, and markets.*
- *Custom Preparation.*
- *Scheduled Deliveries*
- *Consistent and timely deliveries straight to your business location – with flexible scheduling options to suit your operations.*



## LOGISTICS

---

Freshleaf ensures that your produce arrives fresh, fast, and on time. We operate a well-organized delivery system that serves local restaurants, and businesses with efficiency and care.

Our logistics team manages orders from preparation to dispatch, maintaining cold-chain standards where necessary to preserve freshness. We offer scheduled deliveries, flexible order sizes, and quick turnaround times to meet your needs.

Reliability is at the heart of how we move fresh produce from our hands to yours.






# FRESH LEAF

— F A R M S —



 WhatsApp

 078 0232 189

 siyabongatromp@gmail.com

 Plot 87 Meyer Road  
Homelands  
Meyerton

